

Posterior Polar Cataract

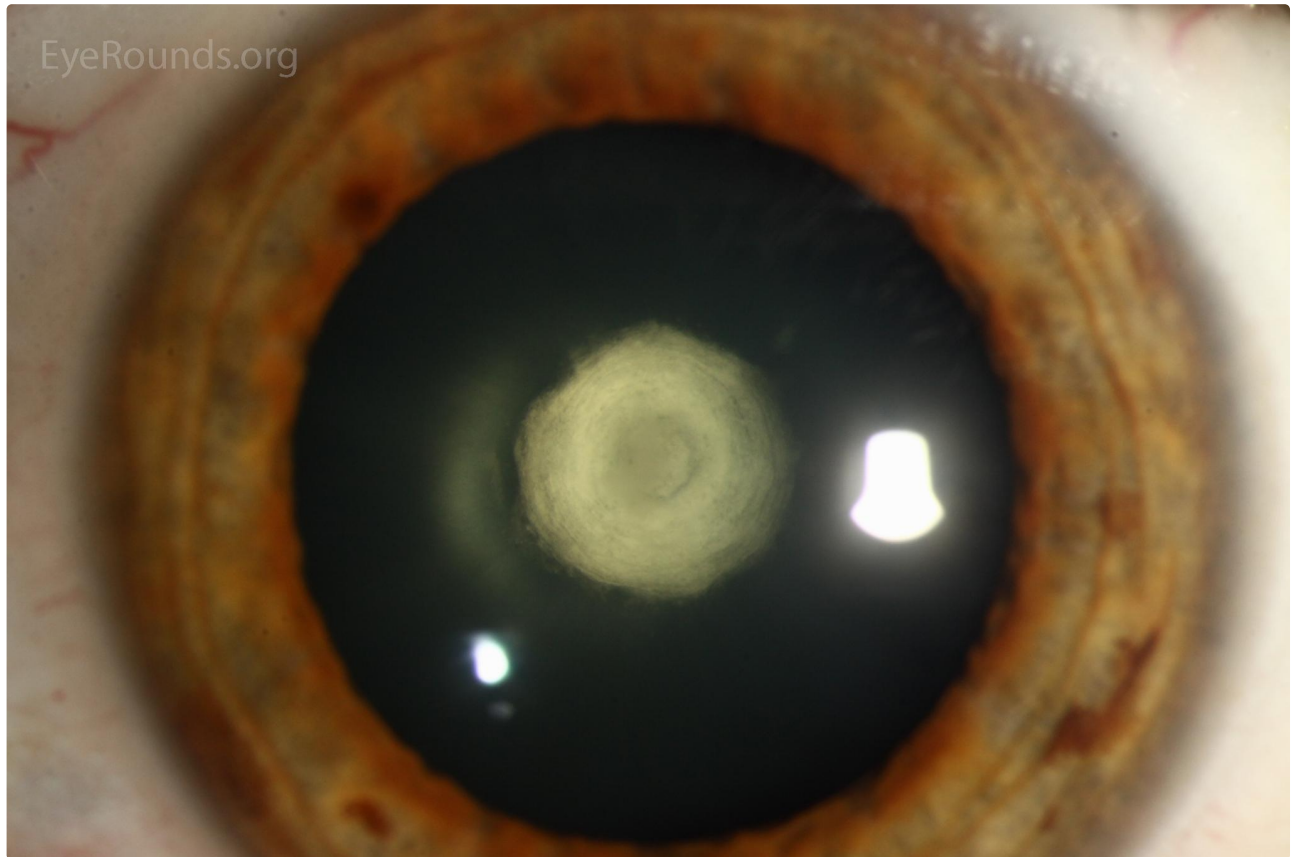
Category(ies): [Cataract](#), [Lens](#)

Contributor: [Lindsay McConnell, MD](#)

Photographer: [Cindy Montague, CRA](#)



Posterior polar cataracts are a form of congenital cataract commonly associated with posterior capsule changes. They can be autosomal dominant or sporadic and are more commonly bilateral. They are rarely visually significant and are usually stable, but may progress over time. This 42-year-old patient was referred from an outside provider with complaints of blurred vision at distance and near in addition to being bothered by glare. He had 2.5 mm concentric posterior polar opacities in both eyes and elected to undergo cataract extraction.



[Enlarge](#)

[Download](#)





 [Enlarge](#)

 [Download](#)

Image Permissions:



Ophthalmic Atlas Images by [EyeRounds.org](#), [The University of Iowa](#) are licensed under a [Creative Commons Attribution-NonCommercial-NoDerivs 3.0 Unported License](#).

Address

University of Iowa
Roy J. and Lucille A. Carver College
of Medicine
Department of Ophthalmology and
Visual Sciences
200 Hawkins Drive
Iowa City, IA 52242

[Support Us](#)

Legal

Copyright © 2019 The University of
Iowa. All Rights Reserved
[Report an issue with this page](#)
[Web Privacy Policy](#) |
[Nondiscrimination Statement](#)

Related Links

[Cataract Surgery for Greenhorns](#)
[EyeTransillumination](#)
[Gonioscopy.org](#)
[Iowa Glaucoma Curriculum](#)
[Iowa Wet Lab](#)
[Patient Information](#)
[Stone Rounds](#)
[The Best Hits Bookshelf](#)

EyeRounds Social Media

Follow



Receive notification of new cases,
[sign up here](#)
[Contact Us](#)
[Submit a Suggestion](#)